



IDS 2025 NEWS

CONTECpro

pro LightTransmitting

The new pro root posts are a good addition to the EXATEC, CYTEC, and CONTEC root posts made of white opaque HT-Glassfiber, which have been proven in practice worldwide for over 20 years.

pro LightTransmitting throughout the entire apical post area for – optimized and shortened – primary curing of the composite, up to the tip of the root post. In a tightly timed schedule, the dentist gains valuable seconds to be able to proceed with the next step without losing time.

The new pro line features the same excellent properties, particularly in terms of stability and secure bonding with composite materials.

High bending strength

High fatigue and fracture resistance

Homogeneity due to dentin-like modulus of elasticity

High radiopacity

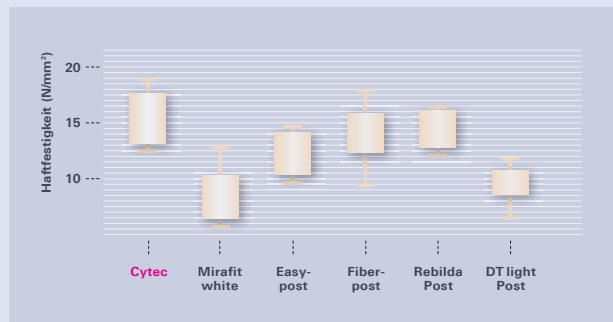
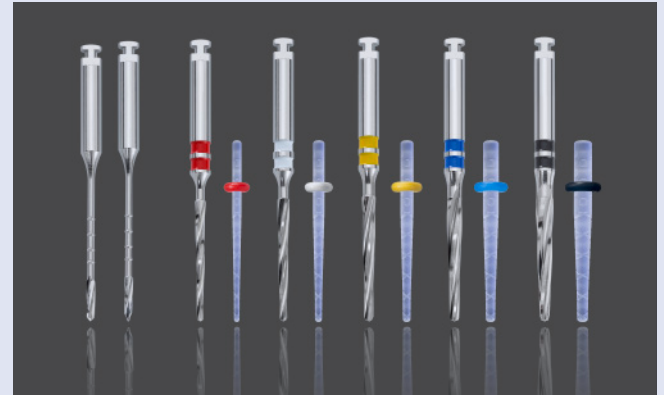
Secure adhesion due to micro-retentive surface

With CONTECpro eco, the particularly careful application of the adhesive system is essential, as CONTECpro eco does not have the mesh-like retentions.

Secure adhesion through micro-retentive surface

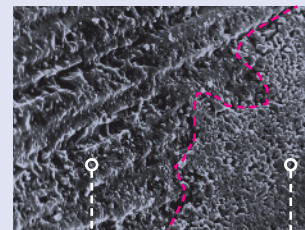
The additional mesh structure on the surface of the CONTEC post enhances the adhesive bond between the micro-retentive surface of the post and the resin. The result is an exceptionally secure adhesion – without the use of a silane – simple and efficient.

Scientific studies conducted at the University of Rostock have demonstrated this for the CYTEC system. These results are transferable to CONTEC, as both posts have the same surface mesh structure.

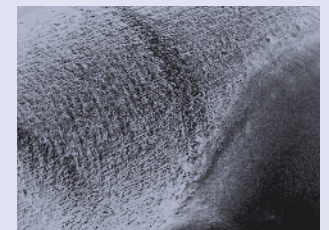


In the comparison, CYTEC blanco achieved the highest bonding strength. This shows that the unique surface structure of our root posts supports micro-retentive adhesion, leading to optimised bonding between the post and the adhesive bonding material.

Published in Biomed Tech 2009
Scientific study at the University of Rostock

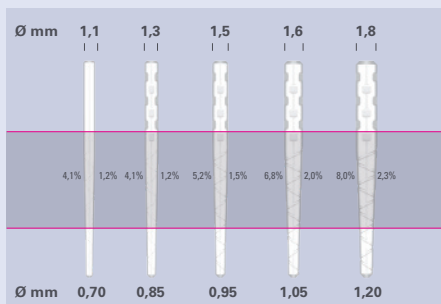


Root post with bonder
Fibrous structure still visible



Root post with
bonder + composite

CONTECpro



REF 44 600



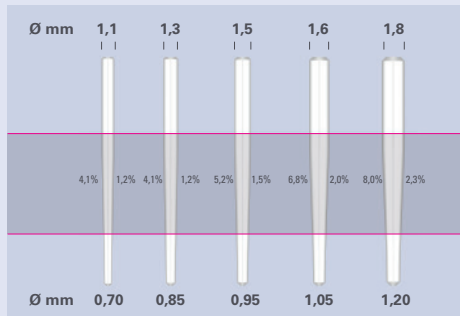
Refill Pack

* The Standard Sets and Test Sets are shipped in a SHIPPING BOX. Posts and Drills each in blister packs. Please see the price list for the contents.

CONTECpro Root Post System			universal	1,1 mm	1,3 mm	1,5 mm	1,75 mm	2,0 mm
		Code	-	red	white	yellow	blue	black
Instruments		package of	REF					
	Preshaping Drill with guiding tip	1	42 010					
	Preshaping Drill with cutting tip	1	43 000					
	Calibration Drill	1		44 00 D11	44 001	44 002	44 003	44 004
CONTECpro								
	Standard Set	Assortment	44 800*					
	Test Set	Assortment	44 810*					
	ChangeOverSet Kit with 1 Drill per REF	Assortment	44 800COS					
	HT-Glassfiber	5		44 80D11C5	44 801C5	44 802C5	44 803C5	44 804C5
	HT-Glassfiber	10		44 80 D11	44 801	44 802	44 803	44 804
System Box, empty		1		10 002				



CONTECpro eco







REF 44 700



REF 10 002 (empty)

* The Standard Sets and Test Sets are shipped in a SHIPPING BOX. Posts and Drills each in blister packs. Please see the price list for the contents.

CONTECpro eco Root Post System			uni- versal	1,1 mm	1,3 mm	1,5 mm	1,75 mm	2,0 mm
		Code	-	red	white	yellow	blue	black
Instruments		package of	REF					
	Preshaping Drill with guiding tip	1	42 010					
	Preshaping Drill with cutting tip	1	43 000					
	Calibration Drill	1		44 00 D11	44 001	44 002	44 003	44 004
CONTECpro eco		Assort- ment	44 900*					
	Test Set	Assort- ment	44 910*					
	ChangeOverSet Kit with 1 Drill per REF	Assort- ment	44 900COS					
	HT-Glassfiber	5		4490D11	44 901	44 902	44 903	44 904
System Box, empty		1		10 002				