

# PSI Periodontometer

## Measurement scale as per Prof. Dr. Günay

According to the new PAR classification, treatment steps and Perio guideline (DE 2021).

## Tip

Fine, rounded tip – gentle on tissue

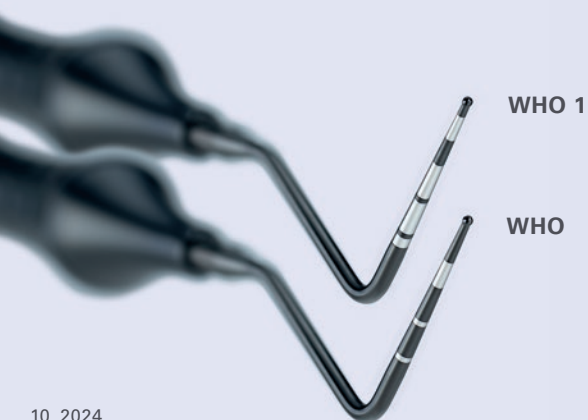
## Deep black »Diamond Like Carbon« DLC coating

for maximum contrast and optimised readability of the measurement scale. Virtually wear-free, non-fading coating.

## Seamless transitions in the measurement area

## Absolutely resistant

to all types of disinfection and sterilisation



WHO 1

WHO



# PSI Periodontometer

as per Prof. Dr. Günay

Periodontometer with new measurement scale according to the new »Perio guideline for the systematic treatment of periodontitis and other periodontal diseases«. This guideline came into force in Germany on 1<sup>st</sup> July 2021 and is the first independent guideline for periodontal treatment.

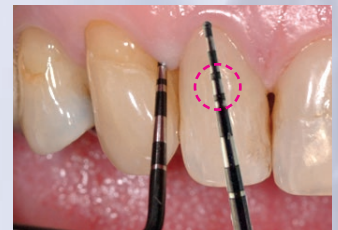
With the new measurement scale, all values necessary for the implementation of the new guideline concerning the new classification and the new therapy steps can be determined. It simplifies the diagnosis of periodontal and peri-implant diseases in accordance with the new guideline.

Probe depth < 3.5 mm: Code 0 – Code 2  
 Probe depth 3.5 – 5.5 mm: Code 3  
 Probe depth > 5.5 mm: Code 4

The two narrow, black depth markings serve as a reference for quick reading of the PSI values 3.5 and 5.5 mm.



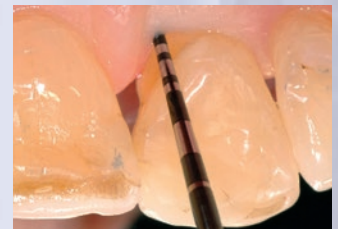
Width of the attached gingiva



References: 3.5 and 5.5 mm



Probe depth of tooth 11 in the distovestibular site



Probe depth of tooth 21 in the mesiopalatal site

Intra-oral images:

Prof. Dr. Günay, DGParo – Periodontal Specialist, Hanover / Germany

# PSI Periodontometer



Periodontometer		REF 700..	REF 54...	REF B442...	REF 442...	REF 5012...
 <p><b>WHO</b> 3,5 - 5,5 - 8,5</p>	700WHO	546WHO	B442WHO	442WHO	5012WHO	
			540WHO			
			541WHO			
			542WHO			
			543WHO			
			544WHO			
			545WHO			
	 <p><b>WHO 1</b> 3,5 - 5,5 - 8,5</p>	700WHO1	546WHO1			5012WHO1
			540WHO1			
			541WHO1			
			542WHO1			
			543WHO1			
			544WHO1			
			545WHO1			



# PSI Periodontometer



Periodontometer		REF 700..	REF 546...	REF B442...	REF 442...	REF 5012...
<b>PA-Sonde</b> (Prof. Dr. GÜNAY) 0,5 – 1 – 2 – 3(3,5) – 4 – 5(5,5) – 6 – 8 – 10 – 12		700GY	546GY	—	—	5012GY
<b>PCP11</b> 3 – 6 – 8 – 11		700PCP11	546PCP11	B442PCP11	442PCP11	5012PCP11
<b>PCP12</b> 3 – 6 – 9 – 12		700PCP12	546PCP12	B442PCP12	442PCP12	5012PCP12
<b>PCP22</b> 2 – 4 – 6 – 8 – 10 – 12		700PCP22	546PCP22	B442PCP22	442PCP22	5012PCP22
<b>UNC12</b> Measurement scale coded with 1 mm divisions (1–12 mm)		700UNC12	546UNC12	B442UNC12	442UNC12	5012UNC12
<b>UNC15</b> Measurement scale coded with 1 mm divisions (1–15 mm)		700UNC15	546UNC15	B442UNC15	442UNC15	5012UNC15
<b>DPSI</b> 4 – 6		700DPSI	546DPSI	B442DPSI	442DPSI	5012DPSI
<b>Goldman Fox</b> 1 – 2 – 3 – 5 – 7 – 8 – 9 – 10		700GF	546GF	B442GF	442GF	5012GF
<b>Michigan</b> 3 – 6 – 8		700MI	546MI	B442MI	442MI	5012MI
<b>Williams</b> 1 – 2 – 3 – 5 – 7 – 8 – 9 – 10		700WI	546WI	B442WI	442WI	5012WI

