

# Exatec

## Root Post System

Exatec posts are designed for teeth with significant coronal destruction.

### **High bending strength**

Achieved through the use of high tenacity HT Glassfiber, which bonds perfectly with the matrix.

HT Glassfiber: 1.678 MPa

Determined accordingly to EN ISO 178

### **High fatigue and fracture resistance**

### **Homogeneity due to dentin-like elastic modulus**

### **Secure adhesion due to micro-retentive surface**

### **High radiopacity**

### Exatec drills

### **Efficient and sharply cutting**

Scientifically tested and proven in practice since 2001.

For further information please see our brochure »Exatec+Cyttec+Contec« or visit our website [www.hahnenkratt.com](http://www.hahnenkratt.com)

### Homogeneity due to dentine-like E-Modulus

According to Professor Dr. Wintermantel from the faculty for »Biocompatible Materials and Building Techniques« of the University of Zurich, Switzerland, the following applies to a load-bearing implant: »Its homoelasticity is an important requirement for the structural compatibility of a load-bearing implant. This refers to the elastic deformation behaviour of an implant approaching that of the recipient tissue.« This also applies to root posts.

Our HT-Glassfibre material exhibit a modulus of elasticity resembling that of dentine. This approaches the required homoelasticity.

A core which is as homogeneous as possible reduces the risk of the root fracturing and promotes the stability of the post and core.

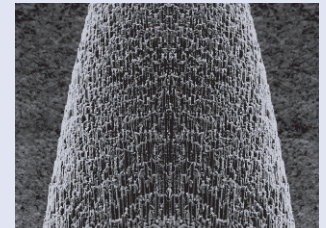


### Elasticity in comparison

|                                 |  |
|---------------------------------|--|
| <b>Elasticity in comparison</b> | 13,6 GPa<br><small>(according to DIN 53 390)</small> |
| <b>Dentine</b>                  | ≈18,6 GPa  |
| <b>Titanium</b>                 | 117,0 GPa  |
| <b>Zirconium</b>                | 190,0 GPa  |



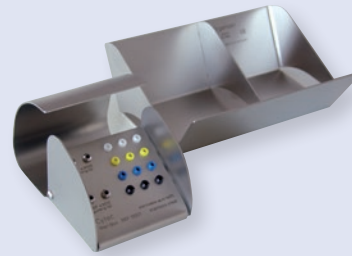
Bionics offers indications for the technical way of designing biological systems. Even the fibre reinforced composite technique originates from biological structures.





REF 42 600

\*The Standard Sets and Test Sets are shipped in a SHIPPING BOX. Posts and Drills each in blister packs. Please see the price list for the contents.



REF 10 003 + 10 000



Refill Pack

| Exatec Root Post System |                                      | Post head-Ø<br>apik. length<br>apic. Stiff Ø ▲<br>apic. Stiff Ø ▼<br>mm | universal | 2,6<br>6,6<br>1,461<br>0,98<br>mm | 2,7<br>8,0<br>1,559<br>0,98<br>mm | 2,8<br>9,7<br>1,681<br>0,98<br>mm | 2,2<br>-<br>-<br>0,98<br>mm |
|-------------------------|--------------------------------------|---|-----------|-----------------------------------|-----------------------------------|-----------------------------------|-----------------------------|
|                         |                                      | Code  | -         | white                             | yellow                            | blue                              | green                       |
| Instruments             |                                      | package of  | REF       |                                   |                                   |                                   |                             |
|                         | Preshaping Drill<br>with guiding tip | 1   | 42 010    |                                   |                                   |                                   |                             |
|                         | Preshaping Drill<br>with cutting tip | 1   | 43 000    |                                   |                                   |                                   |                             |
|                         | Pilot Drill<br>with cutting tip      | 1   | 42 100    |                                   |                                   |                                   |                             |
|                         | Calibration Drill                    | 1   |           | 42 001                            | 42 002                            | 42 003                            |                             |
|                         | Calibration Drill                    | 1   |           |                                   |                                   |                                   | 42 005                      |
| <b>Exatec</b>           | Standard Set                         | Assortment  | 42 600*   |                                   |                                   |                                   |                             |
|                         | Root Post                            | 5   |           | 42 611C5                          | 42 612C5                          | 42 613C5                          |                             |
|                         | Root Post                            | 10  |           | 42 611                            | 42 612                            | 42 613                            |                             |
|                         | Root Post                            | 10  |           |                                   |                                   |                                   | 42 615                      |
| <b>System Box</b>       |                                      | 1   | 10 003    |                                   |                                   |                                   |                             |
| <b>Organizer, empty</b> |                                      | 1   | 10 000    |                                   |                                   |                                   |                             |

