

CONTEC

Root Post System

CONTEC is designed for roots that are more tapered. The double taper closely matches the natural shape of the root canal.

High bending strength

Achieved through the use of high tenacity HT Glassfiber, which bonds perfectly with the matrix.
HT Glassfiber: 1.678 MPa
Determined accordingly to EN ISO 178

High fatigue and fracture resistance

Homogeneity due to dentin-like modulus of elasticity

High radiopacity

Secure adhesion due to micro-retentive surface

The preformed surface roughness enhances the adhesion of the root post to the adhesive system, the composite. The additional applied mesh-like retentions optimize this adhesion.

With CONTEC eco,

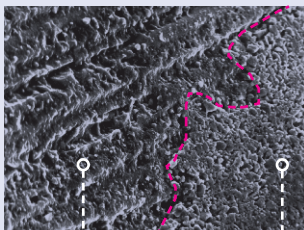
the particularly careful application of the adhesive system is essential, as CONTEC eco does not have the mesh-like retentions.

Scientifically tested and proven in practice since 2001.
For further information please see our brochure
»Exatec+Cyttec+Contec« or visit our website
www.hahnenkratt.com

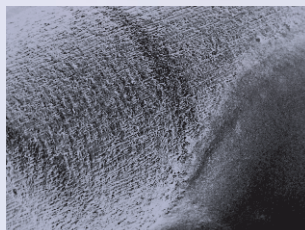
Secure adhesion through micro-retentive surface

The additional mesh structure on the surface of the CONTEC post enhances the adhesive bond between the micro-retentive surface of the post and the resin. The result is an exceptionally secure adhesion – without the use of a silane – simple and efficient.

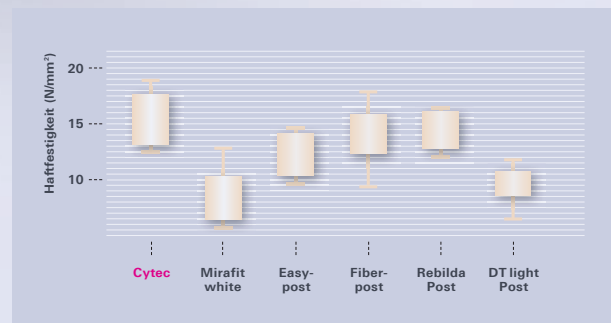
Scientific studies conducted at the University of Rostock have demonstrated this for the CYTEC system. These results are transferable to CONTEC, as both posts have the same surface mesh structure.



Root post with bonder
Fibrous structure still visible



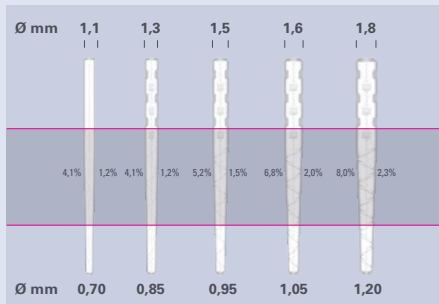
Root post with
bonder + composite



In the comparison, CYTEC blanco achieved the highest bonding strength. This shows that the unique surface structure of our root posts supports micro-retentive adhesion, leading to optimised bonding between the post and the adhesive bonding material.

Published in Biomed Tech 2009
Scientific study at the University of Rostock

CONTEC



REF 44 600

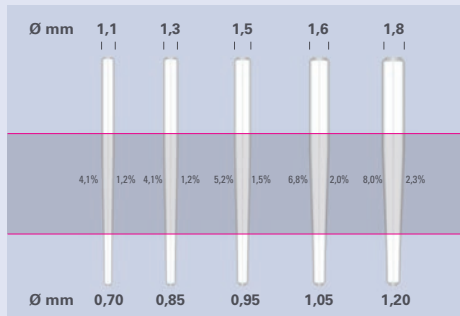


Refill Pack

* The Standard Sets and Test Sets are shipped in a SHIPPING BOX. Posts and Drills each in blister packs. Please see the price list for the contents.

CONTEC Root Post System			universal	1,1 mm	1,3 mm	1,5 mm	1,75 mm	2,0 mm
		Code	-	red	white	yellow	blue	black
Instruments		package of	REF					
	Preshaping Drill with guiding tip	1	42 010					
	Preshaping Drill with cutting tip	1	43 000					
	Calibration Drill	1		44 00 D11	44 001	44 002	44 003	44 004
CONTEC	Standard Set	Assortment	44 600*					
	Test Set	Assortment	44 610*					
	ChangeOverSet Kit with 1 Drill per REF	Assortment	44 600COS					
	HT-Glassfiber	5		44 60D11C5	44 601C5	44 602C5	44 603C5	44 604C5
	HT-Glassfiber	10		4460 D11	44 601	44 602	44 603	44 604
System Box, empty		1		10 002				

CONTEC eco



* The Standard Sets and Test Sets are shipped in a SHIPPING BOX. Posts and Drills each in blister packs. Please see the price list for the contents.

CONTEC Root Post System			uni-versal	1,1 mm	1,3 mm	1,5 mm	1,75 mm	2,0 mm
		Code	-	red	white	yellow	blue	black
Instruments		package of	REF					
	Preshaping Drill with guiding tip	1	42 010					
	Preshaping Drill with cutting tip	1	43 000					
	Calibration Drill	1		44 00 D11	44 001	44 002	44 003	44 004
CONTEC eco								
	Standard Set	Assortment	44 700*					
	Test Set	Assortment	44 710*					
	ChangeOverSet Kit with 1 Drill per REF	Assortment	44 700COS					
	HT-Glassfiber	5		44 70 D11	44 701	44 702	44 703	44 704
System Box, empty		1		10 002				

